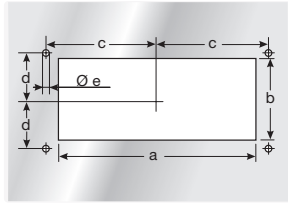
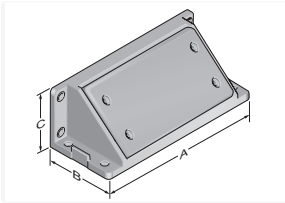




90° angular housing type KD-WG



Product information

With the angular housing type KD-WG, cables can be inserted at a 90° angle to the control cabinet.

The angular housing can either be screwed on directly or attached without tools using the snap-on frame type AR 24.

- Suitable for all 24-pin variants of the KDL/E+
- IP65
- Made in Germany

Article: KD-WG
Order No.: 87121176
PU pcs.: 1

Information, conformities and approvals

