

MED/EMD SERIES ENERGY METERS

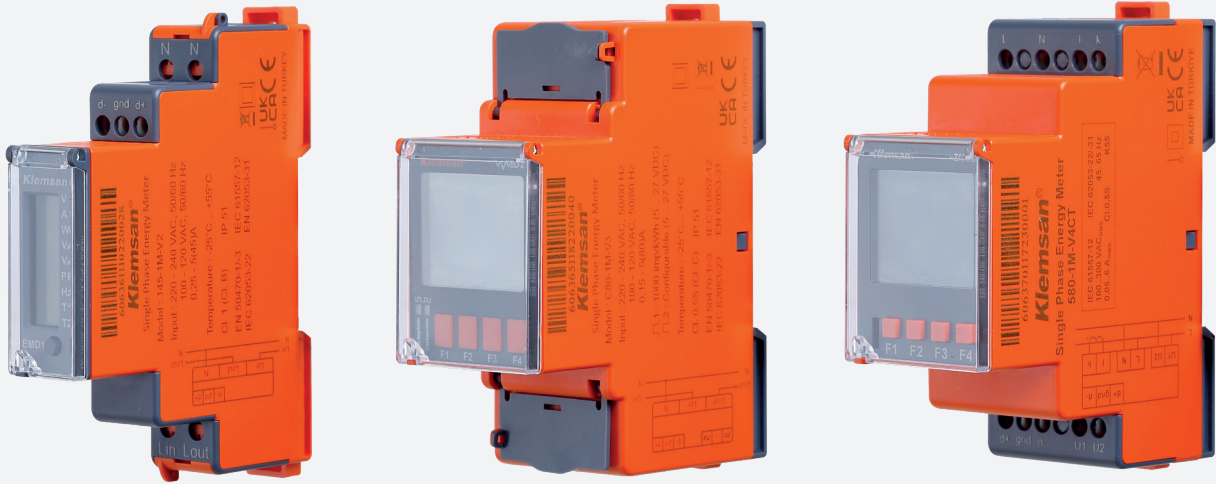
The **MED** and **EMD** series energy meters, designed in rail-mounted enclosures of 18 mm and 36 mm, enable the measurement and monitoring of basic electrical parameters in addition to energy consumption for single-phase systems.

With optional **MID approval**, they offer effective and competitive solutions for billing needs in applications such as marinas and shopping centers.

Equipped with digital outputs and an RS485 (Modbus RTU) interface, the devices can meet different requirements while directly participating in energy monitoring applications.

Accepting current inputs up to 45A and 80A, the devices eliminate the need for current transformers in projects.

- Optional MID Approval
- Direct connection up to 45A and 80A in addition to current transformer models
- High Measurement Accuracy
- 4 sub-tariffs with real-time clock in addition to 2 main tariffs
- RS485 (Modbus RTU) Option
- 2 Digital Output Options
- Free user interface software



Product Name	Order No	Definition	MID Approval	Basic Electrical Parameters	Only Import Active Energy	4 Quadrant Energy Measurement	Measuring Accuracy	Min / Max Data Logging	Total Harmonic Distortion (THD)	Individual Harmonics (up to 31st)	Demand	Alarm Setting	LCD Screen	Digital Outputs (2 Qty)	Main Tariff	Sub-tariffs	RS485 (Modbus RTU)	85-300 V DC/DC	45Amps Direct Connection	80Amps Direct Connection	X1 & X15	Enclosure Dimension	Rail Mount
B45-0W-01	606357	MED1	✓		✓		Class B						✓	1	1			✓	✓			18 mm	✓
B45-1M-V1	606358	MED1	✓	✓		✓	Class B				✓		✓	2	2		✓	✓	✓			18 mm	✓
B45-0M-01	606359	MED1	✓	✓		✓	Class B						✓	1	1			✓	✓			18 mm	✓
145-0W-01	606360	EMD1			✓		Class 1	✓	✓	✓			✓	1	1			✓	✓			18 mm	✓
145-1M-V2	606361	EMD1		✓		✓	Class 1	✓	✓	✓	✓	✓	✓		2		✓	✓	✓			18 mm	✓
145-0M-01	606362	EMD1		✓		✓	Class 1	✓	✓	✓			✓	1	1			✓	✓			18 mm	✓
C80-1M-V3CT	606363	MED2	✓	✓		✓	Class C				✓		✓	2	2	4	✓	✓			✓	36 mm	✓
B80-1M-V2CT	606364	MED2	✓	✓		✓	Class B				✓		✓	2	2		✓	✓			✓	36 mm	✓
C80-1M-V3	606365	MED2	✓	✓		✓	Class C				✓		✓	2	2	4	✓	✓		✓		36 mm	✓
B80-1M-V2	606366	MED2	✓	✓		✓	Class B				✓		✓	2	2		✓	✓		✓		36 mm	✓
B80-0M-02	606367	MED2	✓	✓		✓	Class B						✓	2	1			✓		✓		36 mm	✓
B80-0M-02P	606368	MED2	✓	✓		✓	Class B						✓	2	1			✓		✓		36 mm	✓
B80-0W-01	606369	MED2	✓		✓		Class B						✓	1	1			✓		✓		36 mm	✓
580-1M-V4CT	606370	EMD2		✓		✓	Class 0.5	✓	✓	✓	✓	✓	✓		2	4	✓	✓			✓	36 mm	✓
180-0M-V1CT	606371	EMD2		✓		✓	Class 1	✓	✓	✓			✓	2	1			✓			✓	36 mm	✓
180-0W-01	606372	EMD2			✓		Class 1	✓	✓	✓			✓	1	1			✓		✓		36 mm	✓
580-1M-V3	606373	EMD2		✓		✓	Class 0.5	✓	✓	✓	✓	✓	✓	2	2	4	✓	✓		✓		36 mm	✓
180-0M-02	606374	EMD2		✓		✓	Class 1	✓	✓	✓			✓	2	1			✓		✓		36 mm	✓
180-1M-V2	606375	EMD2		✓		✓	Class 1	✓	✓	✓	✓	✓	✓		2		✓	✓		✓		36 mm	✓

