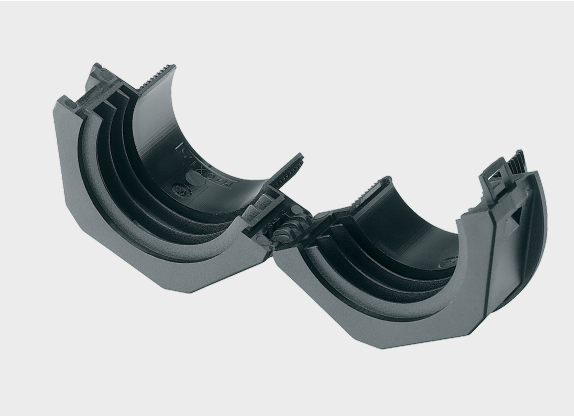




Typ SVT

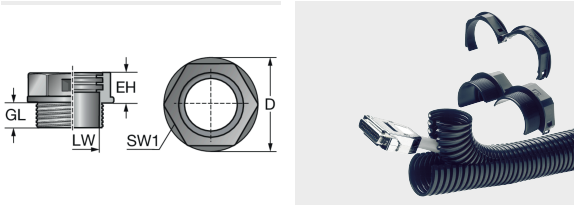


Product information

The split conduit fitting is made of specially modified polyamide 6. The material is self-extinguishing, and halogen, phosphor and cadmium-free. The fittings are used when cable protection conduits fitted with pre-assembled cables need to be fixed or cable protection conduits need to be retrofitted. The SVT is ideal for connecting to our split EWT cable protection conduits and all other Murrflex cable protection conduits with standard corrugation. Particular benefits of the SVT conduit fitting include:

- Subsequent installation or repairs
- Perfect for use with the GMT split lock nut
- Very good system tear-out strength
- Compact design
- Easy assembly and disassembly

Information, conformities and approvals



| Article | Order No. | Color | UV | Connecting thread | Suitable for Murrflex EW | D mm | GL mm | EH mm | LW mm | SW mm | PU pcs. |
|----------------|-----------|-------|----|-------------------|--------------------------|------|-------|-------|-------|-------|---------|
| SVT M16x1,5/11 | 83651258 | Black | ✓ | M16x1,5 | M16/P11 | 30 | 15 | 15 | 11 | 26 | 50 |
| SVT M20x1,5/11 | 83651260 | Black | ✓ | M20x1,5 | M16/P11 | 30 | 15 | 15 | 15 | 26 | 50 |
| SVT M20x1,5/16 | 83651262 | Black | ✓ | M20x1,5 | M20/P16 | 32 | 15 | 15 | 15 | 28 | 50 |
| SVT M25x1,5/16 | 83651264 | Black | ✓ | M25x1,5 | M20/P16 | 32 | 15 | 15 | 21 | 28 | 50 |
| SVT M25x1,5/21 | 83651266 | Black | ✓ | M25x1,5 | M25/P21 | 40 | 15 | 20 | 21 | 36 | 50 |
| SVT M32x1,5/21 | 83651268 | Black | ✓ | M32x1,5 | M25/P21 | 40 | 15 | 20 | 27 | 36 | 50 |
| SVT M32x1,5/29 | 83651270 | Black | ✓ | M32x1,5 | M32/P29 | 50 | 15 | 20 | 27 | 46 | 25 |
| SVT M32x1,5/36 | 83651272 | Black | ✓ | M32x1,5 | M40/P36 | 62 | 15 | 20 | 27 | 55 | 25 |
| SVT M40x1,5/29 | 83651274 | Black | ✓ | M40x1,5 | M32/P29 | 50 | 15 | 20 | 35 | 46 | 25 |
| SVT M40x1,5/36 | 83651276 | Black | ✓ | M40x1,5 | M40/P36 | 62 | 15 | 20 | 35 | 55 | 25 |
| SVT M50x1,5/36 | 83651278 | Black | ✓ | M50x1,5 | M40/P36 | 62 | 20 | 20 | 44 | 55 | 25 |
| SVT M50x1,5/48 | 83651280 | Black | ✓ | M50x1,5 | M50/P48 | 72 | 20 | 25 | 44 | 65 | 10 |
| SVT M63x1,5/48 | 83651282 | Black | ✓ | M63x1,5 | M50/P48 | 72 | 20 | 25 | 57 | 65 | 10 |



Typ SVT

Material properties



mod. polyamide PA 6 I

Thermal properties



Temperature / temperature range -40 °C – 110 °C / short term: 140 °C

Protection class



Protection class IP50

Fire properties



Fire classification acc. to UL94: V0 self-extinguishing



Fire properties as per EN 45545-2 C.I.T. R22 / R23 HL3 :0,58 NF X 70-100-1/-2 600°C (1112 °F), LOI R22 / R23 HL3 :≥ 32 % ISO 4589-2, Ds (max.) R22 / R23 HL3 :57 ISO 5659-2 (25 KW/m²)



Fire properties as per NFPA ASTM E 162, ASTM E 1354, ASTM E 662, Boeing BSS 7239, Boeing BSS 7242, Bombardier SMP 800-C

Chemical resistances



Resistant to: Alcohol, Greases, Fuels, Mineral oils

Technical information



Halogen-free

Conformity



RoHS (EC Directive 2011/65/EU)

Approvals and operating permits



EU railway approval



cURus approval



Typ SVT

General information



Made in Germany
