



Accessories

Type KGM (plastic lock nut)



-30 to +100 °C
Short periods +130 °C

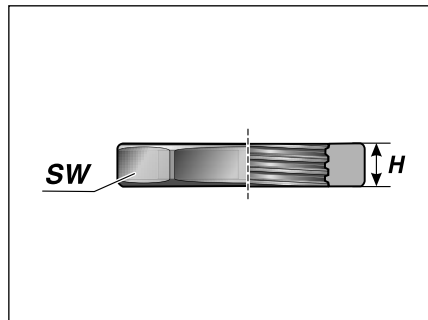
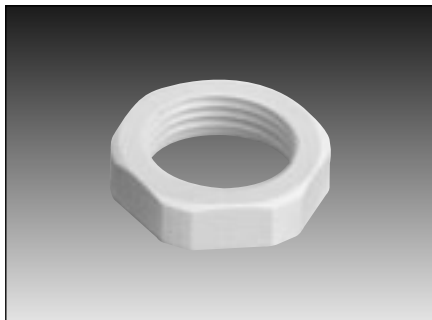


Polyamide



V0

Plastic lock nut made from self-extinguishing polyamide with metric or Pg thread.



KGM

Type	Order no.	Colour	Internal thread	H mm	SW mm	Pack qty
Metric version						
KGM-M12x1.5	83727210	Grey	M12x1.5	5.0	17	100
KGM-M12x1.5	83727250	Black	M12x1.5	5.0	17	100
KGM-M16x1.5	83727212	Grey	M16x1.5	5.0	22	100
KGM-M16x1.5	83727252	Black	M16x1.5	5.0	22	100
KGM-M20x1.5	83727214	Grey	M20x1.5	6.0	26	100
KGM-M20x1.5	83727254	Black	M20x1.5	6.0	26	100
KGM-M25x1.5	83727216	Grey	M25x1.5	6.0	32	100
KGM-M25x1.5	83727256	Black	M25x1.5	6.0	32	100
KGM-M32x1.5	83727218	Grey	M32x1.5	7.0	41	100
KGM-M32x1.5	83727258	Black	M32x1.5	7.0	41	100
KGM-M40x1.5	83727220	Grey	M40x1.5	7.0	50	50
KGM-M40x1.5	83727260	Black	M40x1.5	7.0	50	50
KGM-M50x1.5	83727222	Grey	M50x1.5	8.0	60	50
KGM-M50x1.5	83727262	Black	M50x1.5	8.0	60	50
KGM-M63x1.5	83727224	Grey	M63x1.5	8.0	75	50
KGM-M63x1.5	83727264	Black	M63x1.5	8.0	75	50

Pg version, see next page