

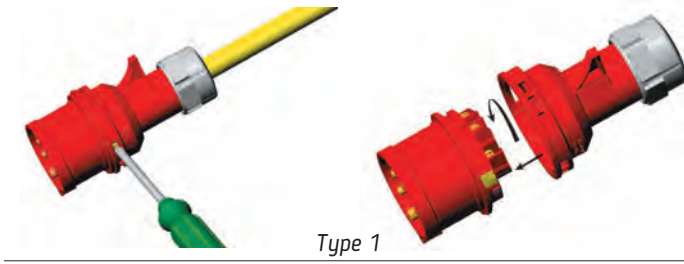
# POLTECHNIK

ELEKTROTECHNIKA PRZEMYSŁOWA



**ME** / **METECEE**

INDUSTRIAL IEC PLUGS AND SOCKETS



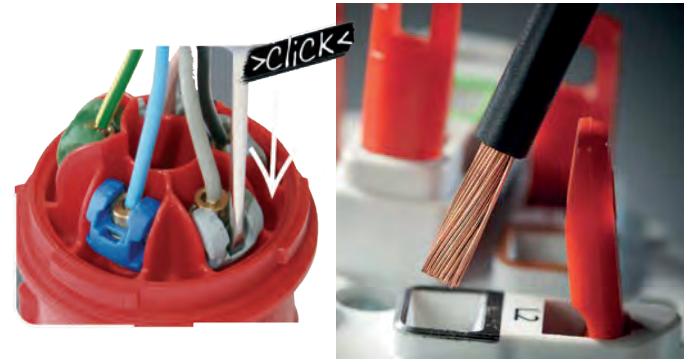
Type 1



Type 2

### Reliable Closing Mechanism

Closing mechanism is locked automatically with a click sound. There is no need to make an extra adjustment or for another locking mechanism. Can be opened easily, quickly and without any damage by the help of a flat head screwdriver. As it can be seen on the body, turning the screwdriver in clockwise direction is enough to open the locking mechanism.



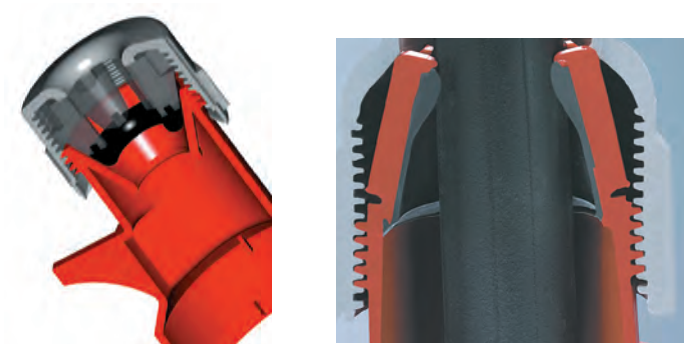
Type 1 - Plug and Socket



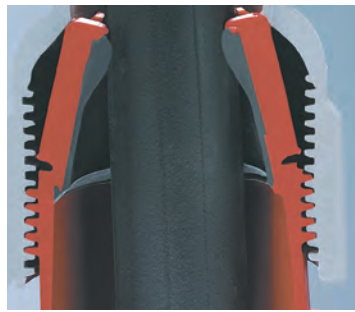
Type 2

### Simple Setting, Opening and Closing With Threads

The outer parts of the body delivered semi unlocked. To open it simply turn the parts 90° counterclockwise direction. To close it turn them 90° clockwise direction. In this way no damage occurs on the cables. The new 4 threaded screw has high endurance.



Type 1

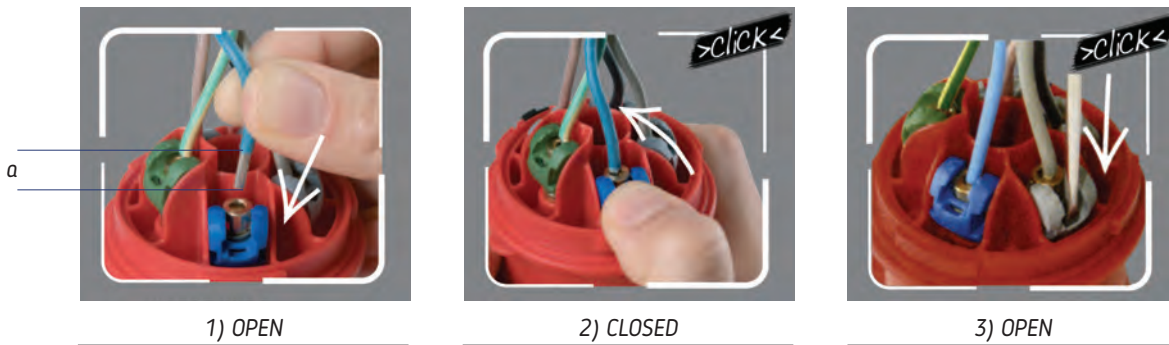


Type 2

### Special Cable Tightening System

With this unique system, it is always possible to control the cable from outside. Cables of different cross sections can be tightened simply and safely. High IP degrees can be met. (IP67)

Acc. to IEC / EN 60309 -1 standard. Ambient Temperature -25°C / +40°C



Cable stripping length (a)

### Push-Type Terminals

- Strip the cable as per “a” measurement as indicated in the above table.
- Insert the stripped part of the cable into the terminal hole.
- Push-up the locking pin in arrowed (Picture 2) direction. Cable is locked into its hole with a special spring system.
- To release the cable, push-down the locking pin in arrowed (Picture 3) direction.
- After locking closing mechanism on bodies of plugs and connectors, fix the main cable by turning the tightening nut on the product to provide better sealing.

“ a “ size

	Min.	Max.
16 A	9 mm	12 mm
32 A	10 mm	14 mm

### Screwless Push-Type Terminals

Maintenance free after installation, shock and vibration resistant, Push-type terminals without the need of cable ferrules for the conductor and the use of crimping tools.

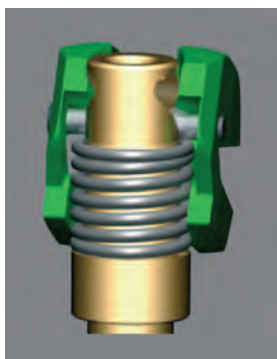
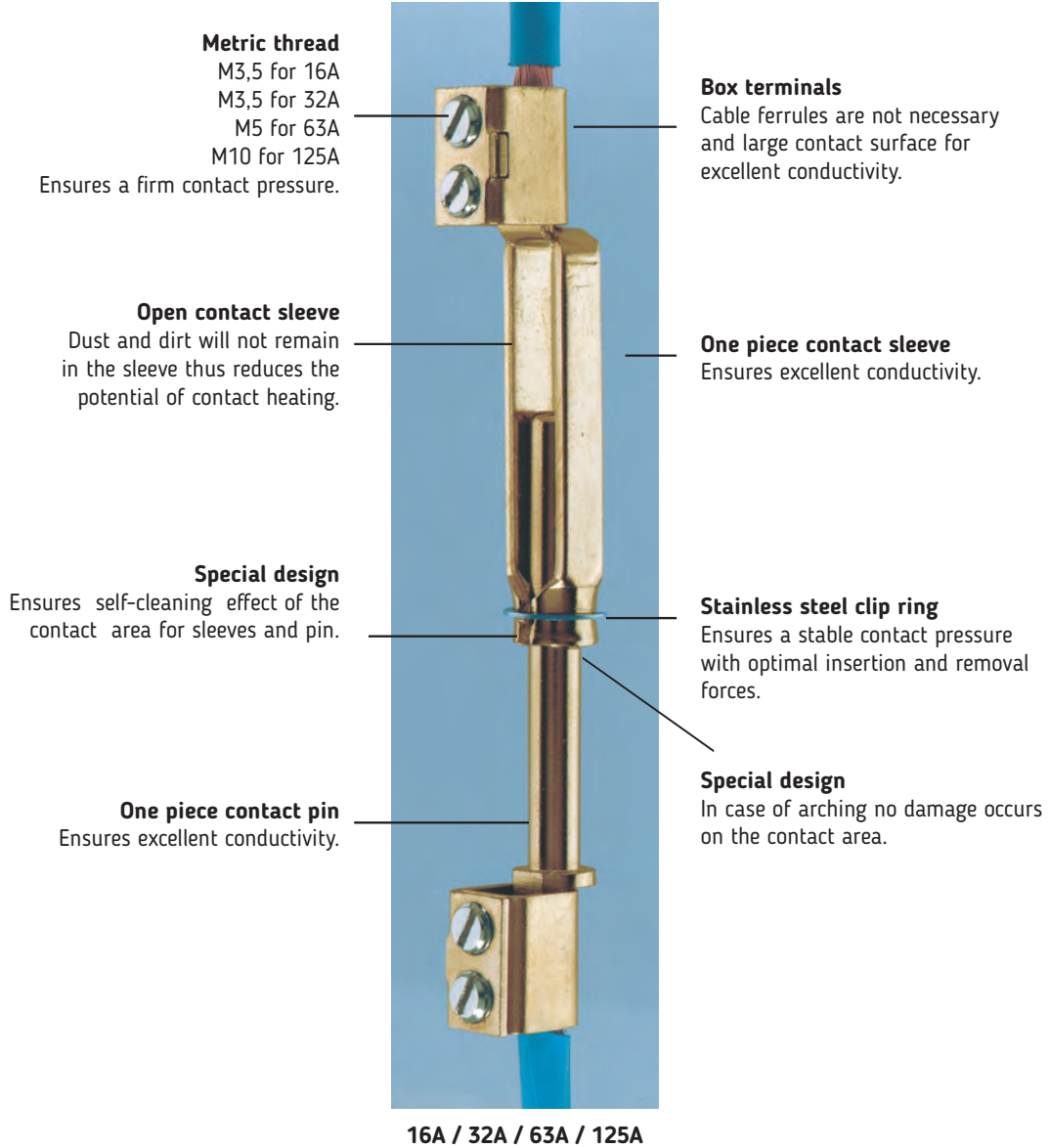


### Sleeve

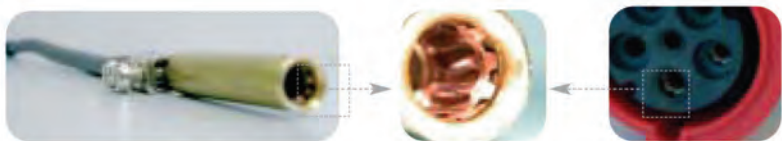
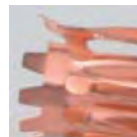
Approved breaking capacity, Self cleaning corrosion free spring, low and stable removal and withdrawal forces, positive conductivity, higher percentage of copper guarantees better conductivity and lower temperature rise.



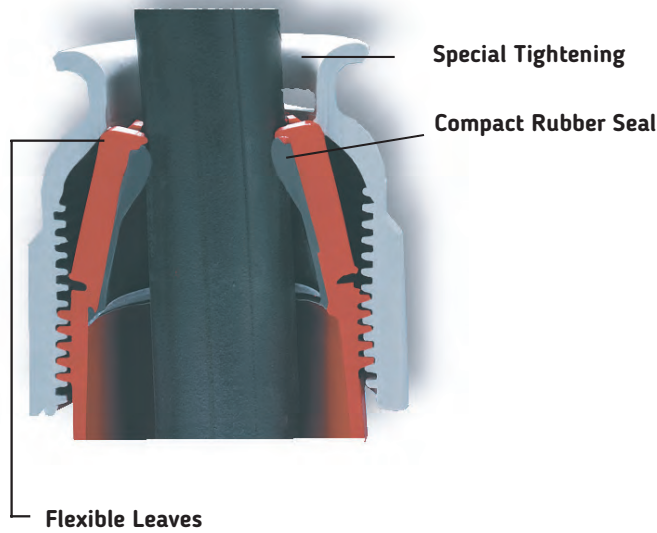
## Pin & Sleeve Structures



Used at Sockets



Ampere & Poles		Cable Diameters
16A	3 and 4 P	Ø 8.1 - 14 mm
16A	5 P	Ø 10 - 15.3 mm
32A	3 and 4 P	Ø 11.5 - 19.3 mm
32A	5 P	Ø 14 - 21.3 mm
63A	4 and 5 P	Ø 17.3 - 31.3 mm
125A	4 ve 5 P	Ø 26 - 50 mm

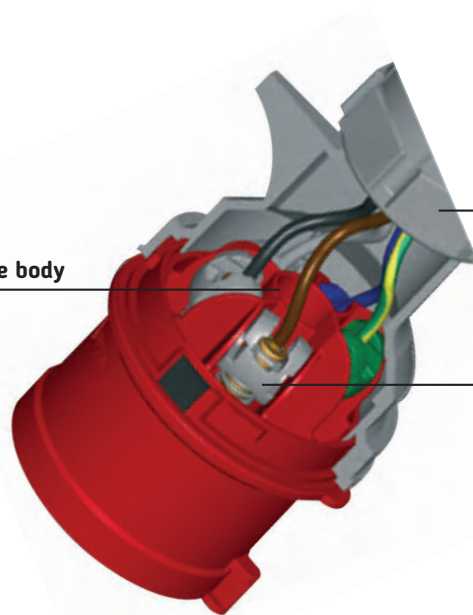


**No more tightening with cable collars!**  
Tightening of the cable can be seen at the cross section at left. In this way, the space inside the body increases up to 25-30%.

**Big Time Saving**  
16A - 32A: ~%52  
63A - 125A: ~%42

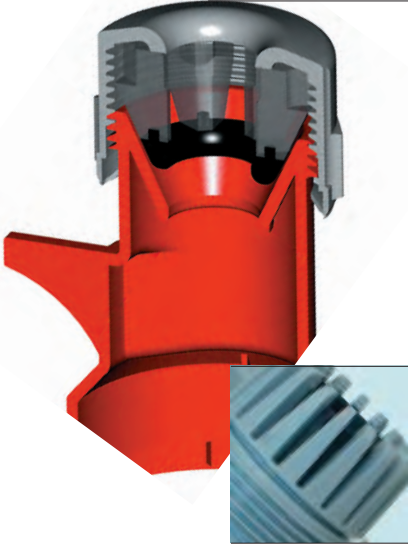


**Big space inside the body**



**Tightening with thread**

**Screwless push-type terminals**  
(for 16A and 32A)



### Simple and Reliable Tightening Mechanism

Special tightening mechanism prevent from accidental loose by the help of saw type thread.

### Special Flexible Leaves

Tightening the special mechanism makes 18 flexible leaves encircle different sizes of cables from min. to max. and fixes the cable without any damage.



### Dry Construction

Draining holes let the water flows without penetrating inside the body.



### Mechanical Impact (IK) Degrees

In accordance with EN50102 European Norm;  
IK 08 / IK 09 for 16A / 32A  
IK 09 / IK 10 for 63A / 125A



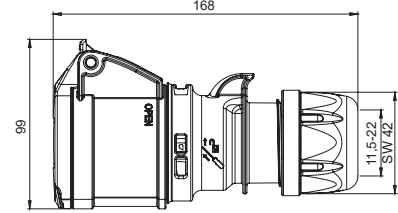
### IP Protection Degrees

In accordance with EN 60529 European Norm;  
IP44 and IP67 between 16A / 125A

## 406411V CONNECTOR



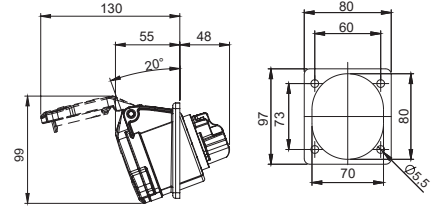
Number of Contacts	3P+N+E
Ampere	32
Protection Degree	IP44
Voltage	380 - 415 V
Earth Contact Position	6h
Terminal	Screw
Box Quantity	10



## 406521V FLANGED SOCKET Angled



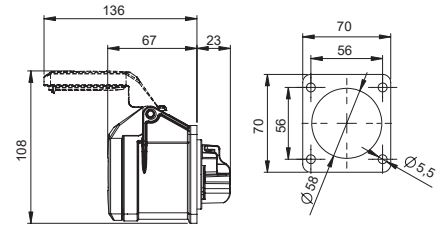
Number of Contacts	3P+N+E
Ampere	32
Protection Degree	IP44
Voltage	380 - 415 V
Earth Contact Position	6h
Terminal	Screw
Box Quantity	10



## 406522V FLANGED SOCKET Straight



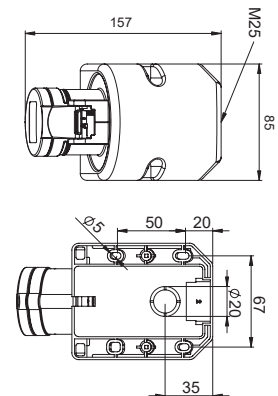
Number of Contacts	3P+N+E
Ampere	32
Protection Degree	IP44
Voltage	380 - 415 V
Earth Contact Position	6h
Terminal	Screw
Box Quantity	10



## 406616V WALL MOUNTED SOCKET



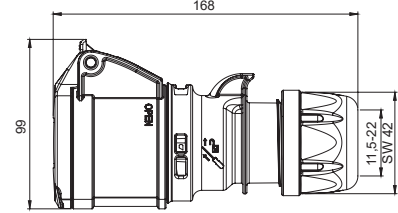
Number of Contacts	3P+N+E
Ampere	32
Protection Degree	IP44
Voltage	380 - 415 V
Earth Contact Position	6h
Terminal	Screw
Box Quantity	10



## 406411 CONNECTOR



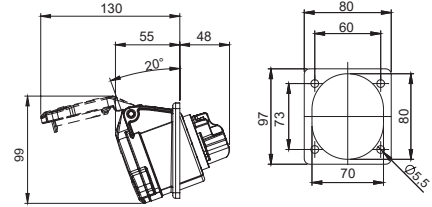
Number of Contacts	3P+N+E
Ampere	32
Protection Degree	IP44
Voltage	380 - 415 V
Earth Contact Position	6h
Terminal	Quick
Box Quantity	10



## 406521 FLANGED SOCKET Angled



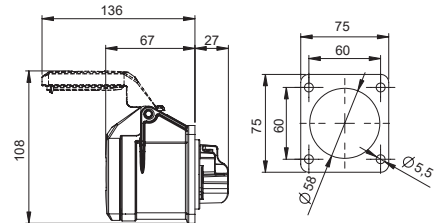
Number of Contacts	3P+N+E
Ampere	32
Protection Degree	IP44
Voltage	380 - 415 V
Earth Contact Position	6h
Terminal	Quick
Box Quantity	10



## 406522 FLANGED SOCKET Straight



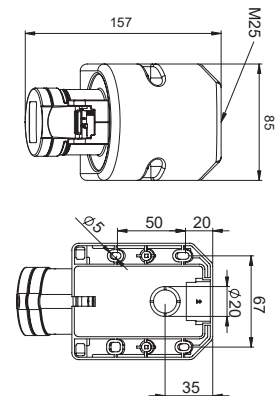
Number of Contacts	3P+N+E
Ampere	32
Protection Degree	IP44
Voltage	380 - 415 V
Earth Contact Position	6h
Terminal	Quick
Box Quantity	10



## 406616 WALL MOUNTED SOCKET



Number of Contacts	3P+N+E
Ampere	32
Protection Degree	IP44
Voltage	380 - 415 V
Earth Contact Position	6h
Terminal	Quick
Box Quantity	10

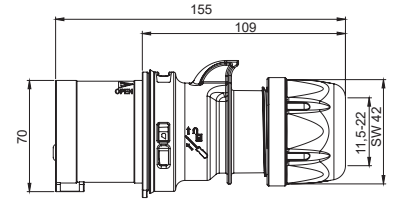




## 406111V PLUG



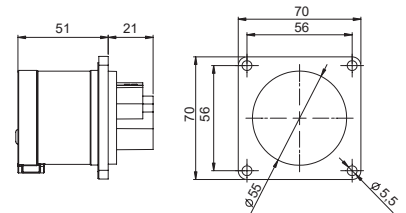
Number of Contacts	3P+N+E
Ampere	32
Protection Degree	IP44
Voltage	380 - 415 V
Earth Contact Position	6h
Terminal	Screw
Box Quantity	10



## 406221V FLANGED PLUG Straight



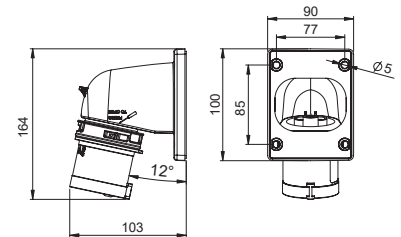
Number of Contacts	3P+N+E
Ampere	32
Protection Degree	IP44
Voltage	380 - 415 V
Earth Contact Position	6h
Terminal	Screw
Box Quantity	10



## 406222V FLANGED PLUG Angled



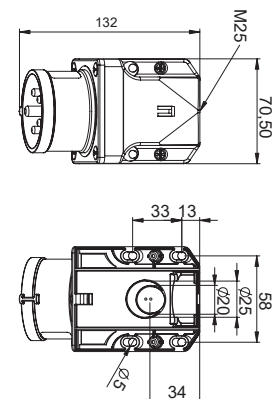
Number of Contacts	3P+N+E
Ampere	32
Protection Degree	IP44
Voltage	380 - 415 V
Earth Contact Position	6h
Terminal	Screw
Box Quantity	5



## 406314V WALL MOUNTED PLUG



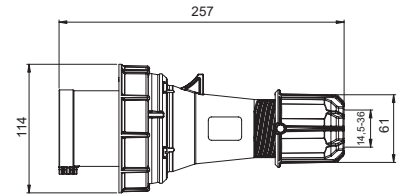
Number of Contacts	3P+N+E
Ampere	32
Protection Degree	IP44
Voltage	380 - 415 V
Earth Contact Position	6h
Terminal	Screw
Box Quantity	10



## 406118 PLUG



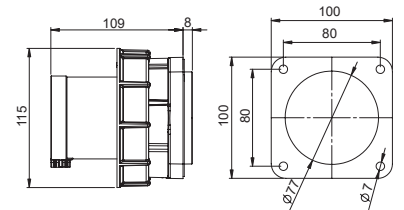
Number of Contacts	3P+N+E
Ampere	63
Protection Degree	IP67
Voltage	380 - 415 V
Earth Contact Position	6h
Terminal	Screw
Box Quantity	2



## 406235 FLANGED PLUG Straight



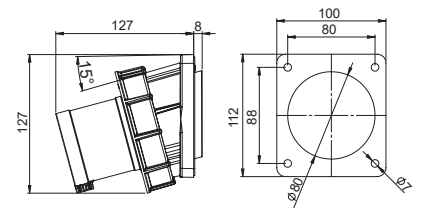
Number of Contacts	3P+N+E
Ampere	63
Protection Degree	IP67
Voltage	380 - 415 V
Earth Contact Position	6h
Terminal	Screw
Box Quantity	2



## 406236 FLANGED PLUG Angled



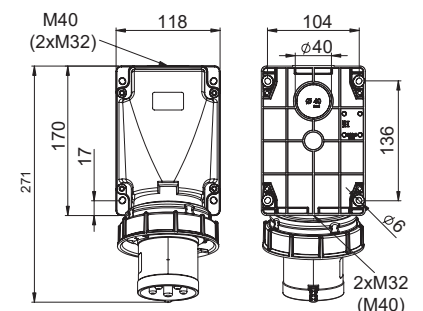
Number of Contacts	3P+N+E
Ampere	63
Protection Degree	IP67
Voltage	380 - 415 V
Earth Contact Position	6h
Terminal	Screw
Box Quantity	2



## 406322 WALL MOUNTED PLUG



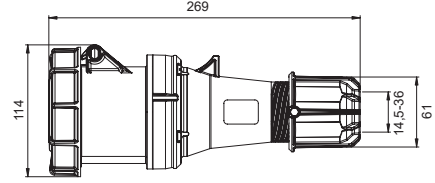
Number of Contacts	3P+N+E
Ampere	63
Protection Degree	IP67
Voltage	380 - 415 V
Earth Contact Position	6h
Terminal	Screw
Box Quantity	2





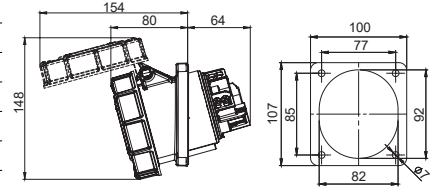
## 406418 CONNECTOR

Number of Contacts	3P+N+E
Ampere	63
Protection Degree	IP67
Voltage	380 - 415 V
Earth Contact Position	6h
Terminal	Screw
Box Quantity	2



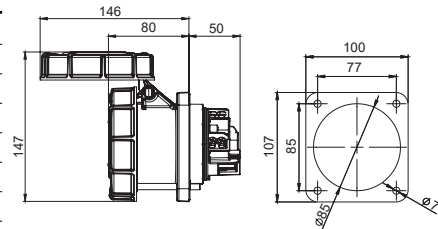
## 406535 FLANGED SOCKET Angled

Number of Contacts	3P+N+E
Ampere	63
Protection Degree	IP67
Voltage	380 - 415 V
Earth Contact Position	6h
Terminal	Screw
Box Quantity	2



## 406536 FLANGED SOCKET Straight

Number of Contacts	3P+N+E
Ampere	63
Protection Degree	IP67
Voltage	380 - 415 V
Earth Contact Position	6h
Terminal	Screw
Box Quantity	2



## 406624 WALL MOUNTED SOCKET

Number of Contacts	3P+N+E
Ampere	63
Protection Degree	IP67
Voltage	380 - 415 V
Earth Contact Position	6h
Terminal	Screw
Box Quantity	2

