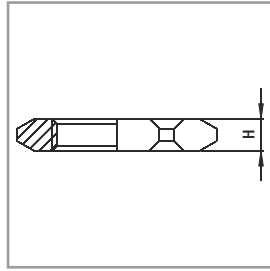
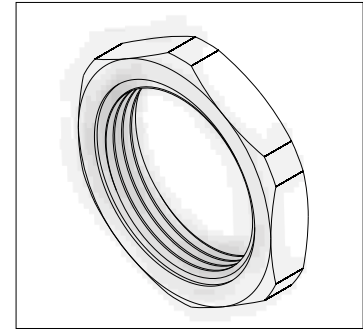


ORTAC PLASTIC LOCK NUTS SERIES

Plastic series are separated than other lock nuts due to the following characteristics;

- %30 glass fiber reinforced lock nut that resistance to high temperature and compression
- Resistance to Ultraviolet rays
- Connection thread norms (DIN 40430 / EN 60423)
- Continuous heat resistance -30 °C +80 °C
- Halogen free (not contain poisonous gas)
- Roughing surface that prevent gliding

POLYAMIDE
LOCK NUTS
STANDART TYPE



SOMUN

Hammadresi	: Polyamid + %30 Cam Elyaf Katkılı
Renk	: RAL 7001 (Gri) RAL 7035 (Açık Gri) RAL 9005 (Siyah)
Bağlantı Dişi M	: EN 60423
Bağlantı Dişi PG	: DIN 40430
Sürekli ısıya direnci	: -30 °C + 80 °C
Kısa süreli ısıya direnci	: +150 °C



RAL 7001



RAL 7035



RAL 9005

METRIC/PG THREAD LOCK NUTS

AG Thread	Gray Code ■ RAL 7001	L. Gray Code ■ RAL 7035	Black Code ■ RAL 9005	H mm	mm
M 12 x 1,5	MSG 01	MSL 01	MSB 01	5	18
M 16 x 1,5	MSG 02	MSL 02	MSB 02	5	22
M 20 x 1,5	MSG 03	MSL 03	MSB 03	6	26
M 25 x 1,5	MSG 04	MSL 04	MSB 04	6	32
M 32 x 1,5	MSG 05	MSL 05	MSB 05	7	41
M 40 x 1,5	MSG 06	MSL 06	MSB 06	7	50
M 50 x 1,5	MSG 07	MSL 07	MSB 07	8	60
M 63 x 1,5	MSG 08	MSL 08	MSB 08	8	75
PG 7	OSG 01	OSL 01	OSB 01	5	19
PG 9	OSG 02	OSL 02	OSB 02	5	22
PG 11	OSG 03	OSL 03	OSB 03	5	24
PG 13.5	OSG 04	OSL 04	OSB 04	6	27
PG 16	OSG 05	OSL 05	OSB 05	6	30
PG 21	OSG 06	OSL 06	OSB 06	7	36
PG 29	OSG 07	OSL 07	OSB 07	7	46
PG 36	OSG 08	OSL 08	OSB 08	8	60
PG 42	OSG 09	OSL 09	OSB 09	8	65
PG 48	OSG 10	OSL 10	OSB 10	8	70