



# Strain relief Cable fixing plate

## Strain relief, type ZL-MH



-40 to +125 °C

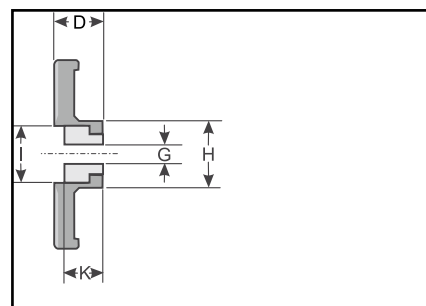
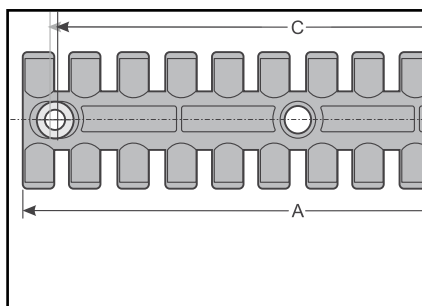


Plate: Polyamide  
Insert bushing: Brass



V0

The strain relief plate ZL-MH is based on the strain relief plate ZL. Inserting the brass bushing enables a standard M5 or M6 screw to be used for fastening.



ZL-MH...

Type	Order no.	Colour	max. number of cables	A mm	B mm	C mm	D mm	G mm	H mm	I mm	K mm	Pack qty
For mounting with M5 screws												
ZL-AH 39	87701210	black	3	38.5	40.0	19.5	10.0	5.5	14.0	12.0	7.0	1
ZL-AH 60	87701212	black	4	59.5	40.0	43.5	10.0	5.5	14.0	12.0	7.0	1
ZL-AH 87	87701214	black	6	86.5	40.0	68.0	10.0	5.5	14.0	12.0	7.0	1
ZL-AH 103	87701216	black	7	102.5	40.0	84.0	10.0	5.5	14.0	12.0	7.0	1
ZL-AH 121	87701218	black	8	121.0	40.0	120.5	10.0	5.5	14.0	12.0	7.0	1
ZL-AH 140	87701220	black	9	139.5	40.0	121.0	10.0	5.5	14.0	12.0	7.0	1
ZL-AH 180	87701222	black	12	180.0	42.0	154.0 - 160.0	10.0	5.5	14.0	12.0	7.0	1
For mounting with M6 screws												
ZL-MH 39/6	87701270	black	3	38.5	40.0	19.5	10.0	6.5	14.0	12.0	7.0	1
ZL-MH 60/6	87701272	black	4	59.5	40.0	43.5	10.0	6.5	14.0	12.0	7.0	1
ZL-MH 70/6	87701074	black	5	69.5	40.0	43.5	10.0	6.5	14.0	12.0	7.0	1
ZL-MH 87/6	87701278	black	6	86.5	40.0	68.0	10.0	6.5	14.0	12.0	7.0	1
ZL-MH 103/6	87701282	black	7	102.5	40.0	84.0	10.0	6.5	14.0	12.0	7.0	1
ZL-MH 121/6	87701284	black	8	121.0	40.0	120.5	10.0	6.5	14.0	12.0	7.0	1
ZL-MH 140/6	87701286	black	9	139.5	40.0	121.0	10.0	6.5	14.0	12.0	7.0	1
ZL-MH 180/6	87701288	black	12	180.0	42.0	154.0 - 160.0	10.0	6.5	14.0	12.0	7.0	1