



Strain relief Cable fixing plate

Strain relief, type ZL-SW



-40 to +125 °C



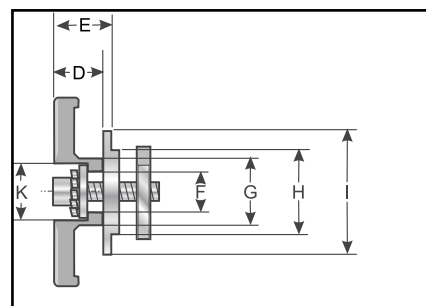
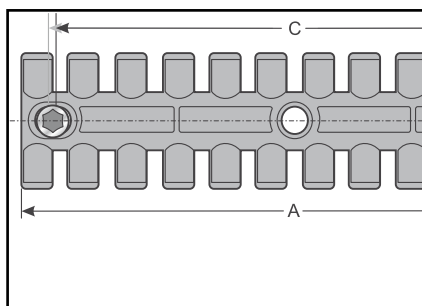
Polyamide



VO

The strain relief plate ZL-SW is based on the strain relief plate ZL. The embedded brass discs hinder the cold flow deformation properties of the plastic under heavy and permanent vibration, thereby preventing the screwed connection from loosening by itself. Slot nuts and screws are made from stainless steel. Easily assembled on a C-rail with 12 mm slot and an inner span up to 27 mm.

- Very quick assembly
- Orderly routing of the cable
- Simple and effective strain relief through cable ties.



Type	Order no.	Colour	max. number of cables	A mm	B mm	C mm	D mm	E mm	F mm	G mm	H mm	I mm	K mm	Pack qty
ZL-SW 39	87702410	black	3	38.5	40.0	19.5	10.0	12.0	6.2	14.0	11.6	18.0	12.0	1
ZL-SW 60	87702412	black	4	59.5	40.0	43.5	10.0	12.0	6.2	14.0	11.6	18.0	12.0	1
ZL-SW 87	87702414	black	6	86.5	40.0	68.0	10.0	12.0	6.2	14.0	11.6	18.0	12.0	1
ZL-SW 103	87702416	black	7	102.5	40.0	84.0	10.0	12.0	6.2	14.0	11.6	18.0	12.0	1
ZL-SW 121	87702418	black	8	121.0	40.0	102.5	10.0	12.0	6.2	14.0	11.6	18.0	12.0	1
ZL-SW 140	87702420	black	9	139.5	40.0	121.0	10.0	12.0	6.2	14.0	11.6	18.0	12.0	1
ZL-SW 180/6	87702422	black	12	180.0	42.0	154.0 - 160.0	10.0	12.0	6.2	14.0	11.6	18.0	12.0	1

Note: The fastening screw is outfitted with metric threads

